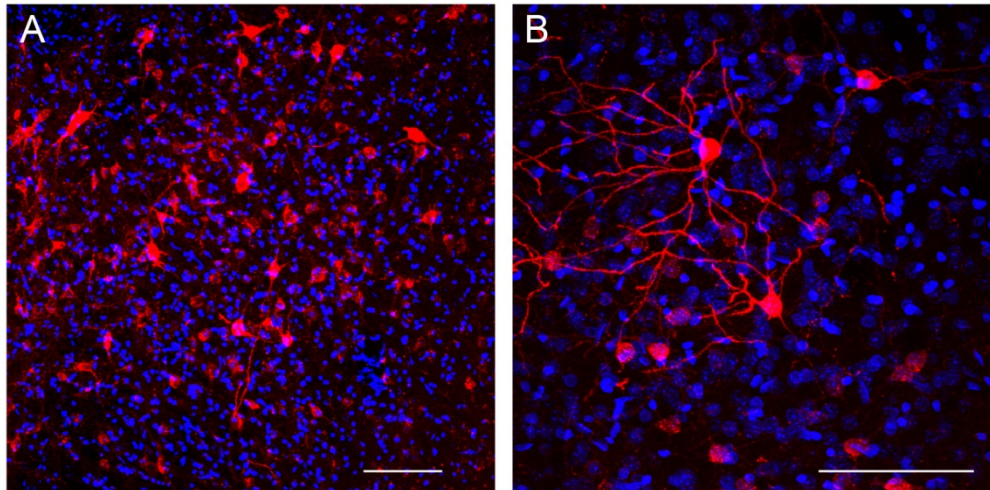




## Anti-mCherry

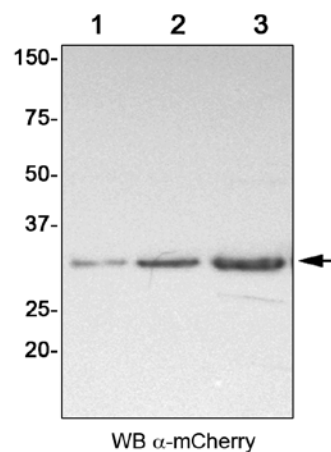
<b>Catalogue No.:</b>	HBT008-200
<b>Description:</b>	Anti-Red Fluorescent Protein (mCherry), polyclonal IgY purified from chicken egg-yolk.
<b>Batch No.:</b>	HBT008.1802
<b>Unit size:</b>	200 µL
<b>Concentration:</b>	2 mg/mL
<b>Host:</b>	Chicken ( <i>Gallus gallus</i> )
<b>Isotype:</b>	IgY (Chicken IgG)
<b>Purity:</b>	Affinity purified using the immunogen immobilized on a solid support; Sample purity > 95% (SDS-PAGE).
<b>Immunogen:</b>	Purified recombinant Red Fluorescent Protein (mCherry).
<b>Specificity:</b>	This antibody recognizes a single band with the predicted molecular weight in Western blot analysis.
<b>Applications:</b>	WB: 1:10,000 – 1:30,000   ELISA: 20,000 – 1:50,000   IF: 1:200 – 1:1,000 Antibody not tested in other applications. Optimal dilutions/concentrations should be determined by the end user.
<b>Form:</b>	Liquid. PBS pH7.4, 20% Glycerol and 0.05% sodium azide.
<b>Storage:</b>	Store at -20°C. Aliquot to avoid repeated freeze-thaw cycles.
<b>Expiration date:</b>	12 months

FOR RESEARCH USE ONLY



**Figure 1. Immunofluorescence of mice brain slices.** AAV viruses with Cre-dependent expression of mCherry fluorescent tag were injected in the nucleus accumbens (NAc) region of D1-Cre mice. **A)** Coronal section for fluorescence image of the NAc brain region showing mCherry staining (red); scale bar, 100  $\mu$ m. **B)** Coronal section for fluorescence image of the NAc brain region showing expression of mCherry (red) of isolated neurons; scale bar, 100  $\mu$ m. **Samples:** 50  $\mu$ m thick mice brain slices perfused with 4%paraformaldehyde. **Protocol:** Immunofluorescence in free-floating slices. **Primary antibody:** chicken anti-mCherry (Cat# HBT008; 1:1000), incubated overnight at 4°C. **Secondary antibody:** alexa-fluor 594 anti-chicken (1:500), incubated for 2h at room temperature.

*Courtesy of Ana J Rodrigues, ICVS, University of Minho.*



**Figure 2. Western blot analysis of purified recombinant mCherry.** Lane 1, 2 and 3 (0.05  $\mu$ g, 0.1 $\mu$ g and 0.5  $\mu$ g, respectively); WB detection using Anti-mCherry antibody (Cat# HBT008) at 1:15,000. Anti-Chicken IgY HRP-conjugated at 1:10,000 was used as secondary antibody.

FOR RESEARCH USE ONLY