

Anti-mCherry



Catalogue No.:	HBT008-100
Description:	Anti-Red Fluorescent Protein (mCherry), polyclonal IgY purified from chicken egg-yolk.
Batch No.:	HBT008.1802
Unit size:	100 µL
Concentration:	2 mg/mL
Host:	Chicken (<i>Gallus gallus</i>)
Isotype:	IgY (Chicken IgG)
Purity:	Affinity purified using the immunogen immobilized on a solid support; Sample purity > 95% (SDS-PAGE).
Immunogen:	Purified recombinant Red Fluorescent Protein (mCherry).
Specificity:	This antibody recognizes a single band with the predicted molecular weight in Western blot analysis.
Applications:	WB: 1:10,000 – 1:30,000 ELISA: 20,000 – 1:50,000 IF: 1:200 – 1:1,000 Antibody not tested in other applications. Optimal dilutions/concentrations should be determined by the end user.
Form:	Liquid. PBS pH7.4, 20% Glycerol and 0.05% sodium azide.
Storage:	Store at -20°C. Aliquot to avoid repeated freeze-thaw cycles.
Expiration date:	12 months

FOR RESEARCH USE ONLY

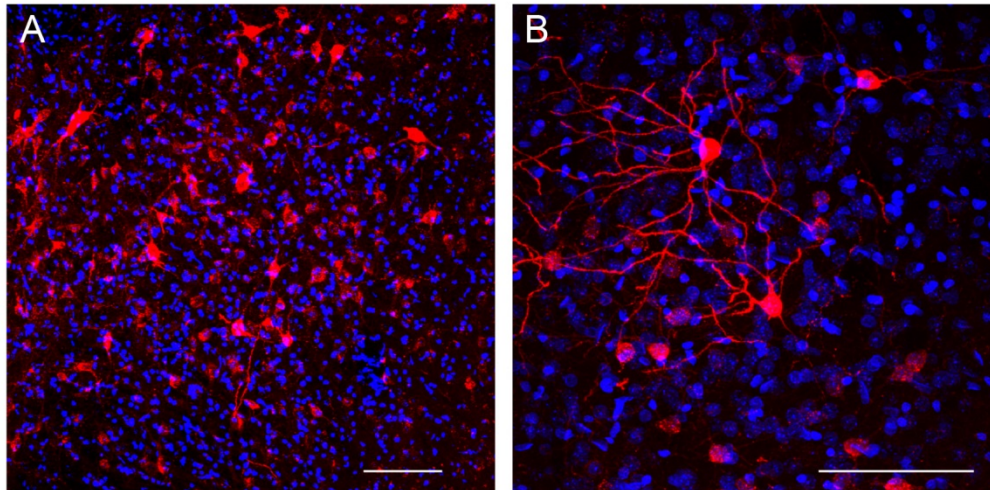


Figure 1. Immunofluorescence of mice brain slices. AAV viruses with Cre-dependent expression of mCherry fluorescent tag were injected in the nucleus accumbens (NAc) region of D1-Cre mice. **A)** Coronal section for fluorescence image of the NAc brain region showing mCherry staining (red); scale bar, 100 µm. **B)** Coronal section for fluorescence image of the NAc brain region showing expression of mCherry (red) of isolated neurons; scale bar, 100 µm. **Samples:** 50 µm thick mice brain slices perfused with 4% paraformaldehyde. **Protocol:** Immunofluorescence in free-floating slices. **Primary antibody:** chicken anti-mCherry (Cat# HBT008; 1:1000), incubated overnight at 4°C. **Secondary antibody:** alexa-fluor 594 anti-chicken (1:500), incubated for 2h at room temperature.

Courtesy of Ana J Rodrigues, ICVS, University of Minho.

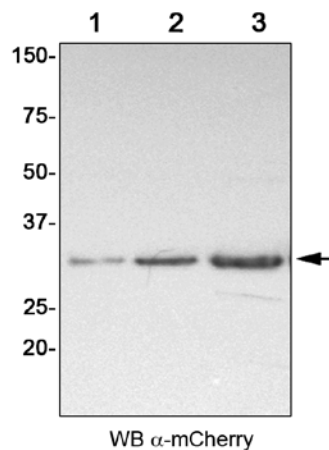


Figure 2. Western blot analysis of purified recombinant mCherry. Lane 1, 2 and 3 (0.05 µg, 0.1 µg and 0.5 µg, respectively); WB detection using Anti-mCherry antibody (Cat# HBT008) at 1:15,000. Anti-Chicken IgY HRP-conjugated at 1:10,000 was used as secondary antibody.

FOR RESEARCH USE ONLY